



Construction

Single inlet, direct driven centrifugal fan with casing of cast aluminium. Impeller with backward curved, self cleaning blades type R, in aluminium sheet.

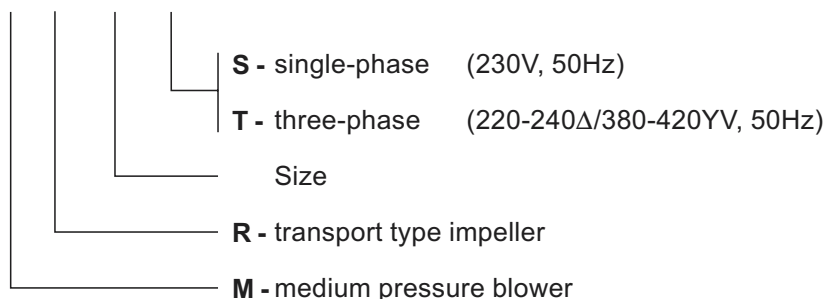
Motor

220-240/380-420V, 50Hz (380-420/660-690V above 3kW) three-phase or 220-240V, 50Hz single-phase asynchronous motor with squirrel cage. Insulation class F, enclosure IP55. Special voltage or frequency, improved enclosure IP65, 2-speed motors and explosion proof motor can be supplied on request.

Wiring diagram, see page 179.

Model numbering system

MPR 300 S

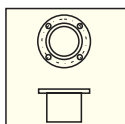


Technical specification

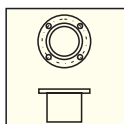
Type	Rated output kW	Speed rpm	Rated current A	Voltage V	Maximum duty m³/h	Pressure max Pa	Sound level* dB(A)	Weight kg	Article number
MPR 300T	1,5	2820	3,4	230/400Y	2240	3400	79	23	113 620 310
MPR 300S	1,5	2820	9,5	230	2240	3400	79	25	113 620 300
MPR 400T	4,0	2910	7,8	400Δ	4080	4180	83	60	113 620 400

* - in the middle of the performance curve.

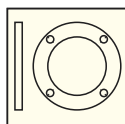
Accessories



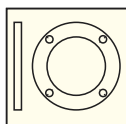
Connector suction side page 102



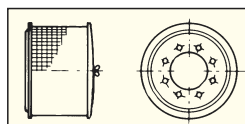
Connector pressure side page 102



Welding flange suction side page 103

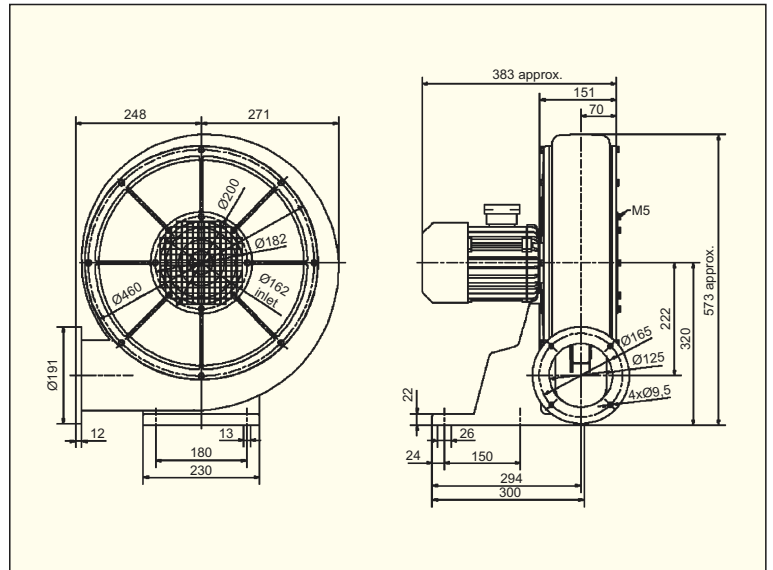
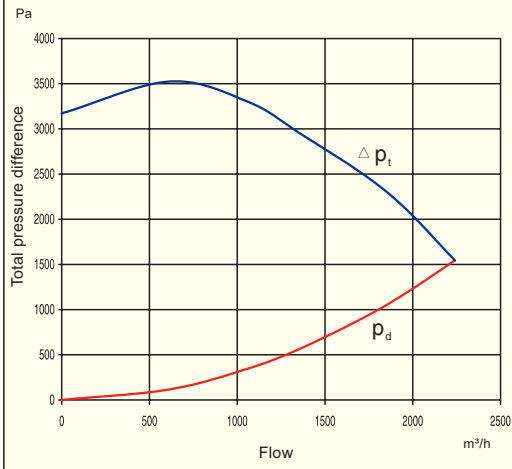


Welding flange pressure side page 103



Filter suction side page 103

MPR300S, MRA300T



MPR400T

