

Construction

Single inlet, direct driven centrifugal fan. Impeller with self-cleaning blades of cast aluminium in one piece, balanced according to ISO 1940.

Casing of sheet steel welded and painted with blue powder coat. Inlet and outlet guard as a standard for GMT-60, 80, 100, 130. Outlet guard as a standard for GMT-200, 300, 500. Impellers in steel, cast iron or brass as well as casings of galvanized or acid-proof steel can be supplied on request.

GMT-100E fan can be supplied with a support type M, an external overload protection, and a 5m cable and a plug.

Motor

220-240/380-420V, 50Hz (380-420/660-690V over 3kW) three-phase or 220-240V, 50Hz single-phase asynchronous motor with squirrel cage rotor, in accordance with IEC72 and IEC34-1. Insulation class F, enclosure IP55. Special voltage or frequency, improved enclosure IP65, 2-speed motors, explosion proof motor can be supplied on request.

Wiring diagram, see page 235.

Accessories

Support type M for module mounting, support type F for wall mounting, suitable for GMT-100 and GMT-130. Connectors and shutters for inlet and outlet side.



GMT-100 with support type F



GMT-100 complete with support type M

Accessories



Protection guard outlet



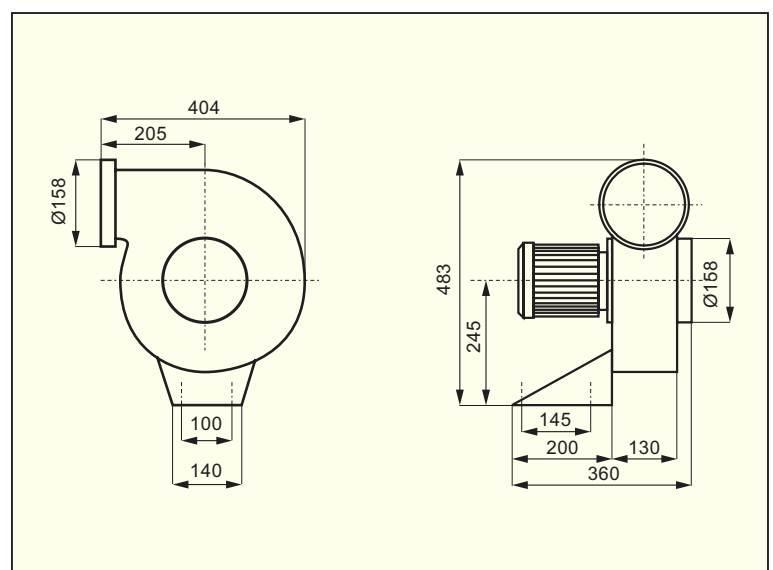
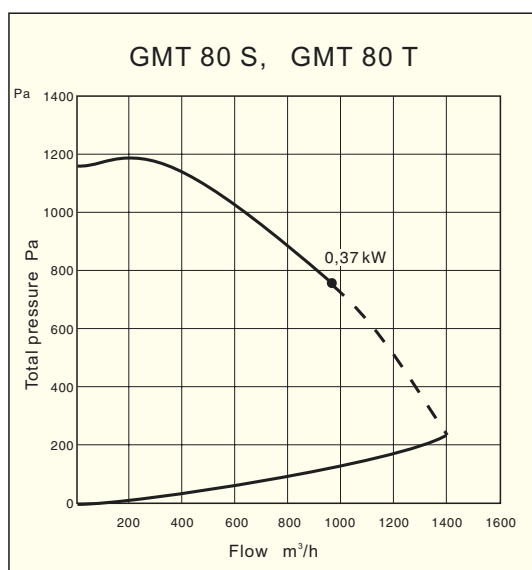
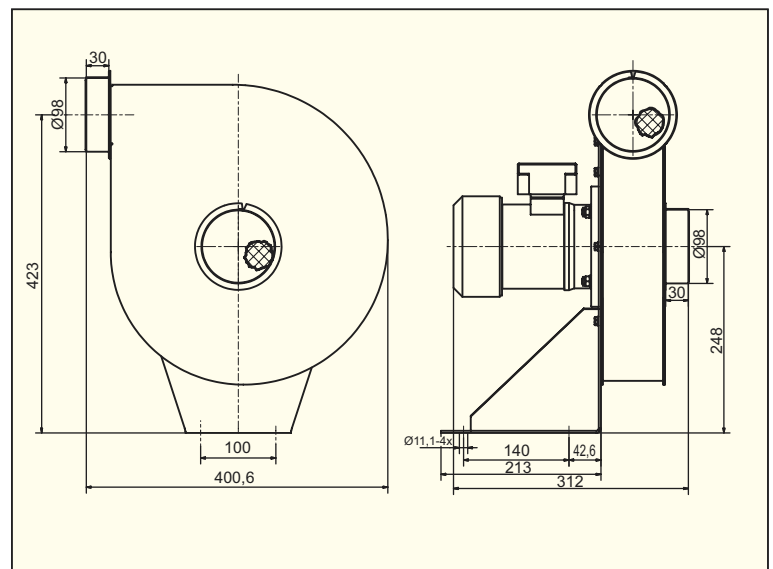
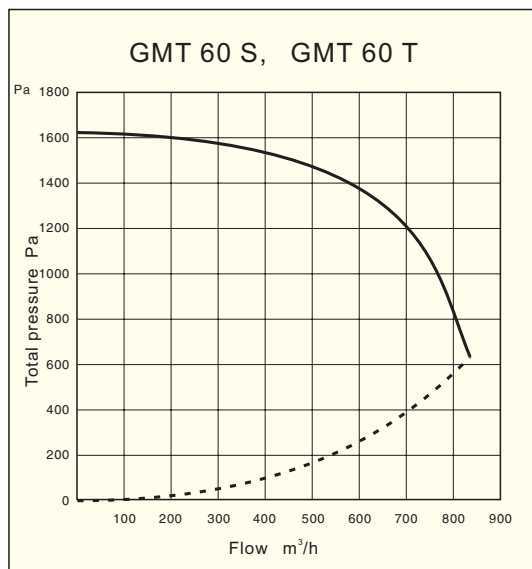
Connector outlet



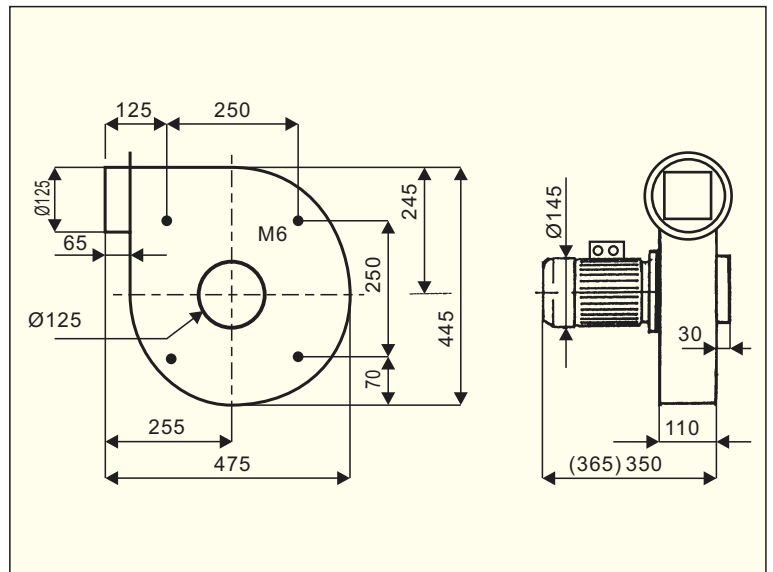
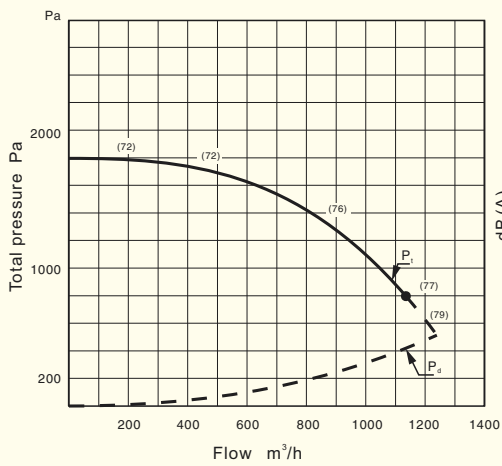
Protection guard inlet

Data

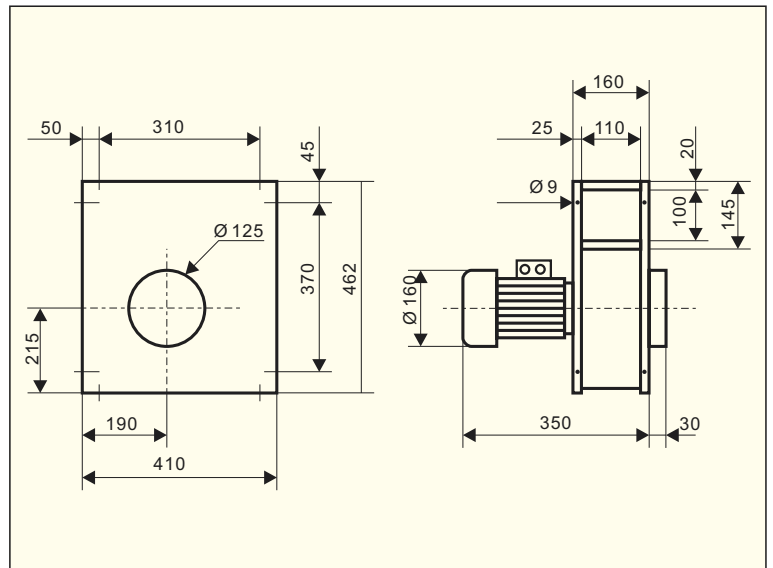
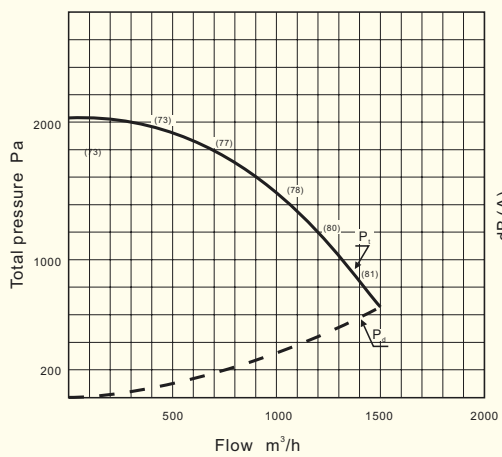
Type	Motor power kW	Speed rpm	Maximum current A	Voltage V	Capacitor μ F	Maximum duty m^3/h	Weight kg	Article number
GMT 60S GMT 60T	0,37 0,37	2800 2800	3,00 1,00	230 400 Y	12	810 810	13,5 13,5	213 240 061 213 240 071
GMT 80S GMT 80T	0,37 0,37	2800 2800	3,00 1,00	230 400 Y	12	950 950	15,5 13,5	213 240 081 213 240 091
GMT100S GMT100T	0,55 0,55	2800 2800	4,00 1,35	230 400 Y	18	1100 1100	14,5 14,0	213 250 501 213 250 001
GMT130S GMT130T	0,75 0,75	2820 2820	5,10 1,90	230 400 Y	25	1500 1500	20,0 17,5	213 251 201 213 250 801
GMT200S GMT200T	1,10 1,10	2820 2820	7,90 2,50	230 400 Y	30	2200 2200	25,0 22,0	213 251 611 213 251 601
GMT300T	2,20	2860	4,60	400 Y		3200	35,5	213 252 001
GMT500T	4,00	2900	7,80	400 Δ		6800	56,0	213 410 801
GMT700T	7,50	2800	14,00	400 Δ	-	8000	82,5	213 252 801



GMT 100 S, GMT 100 T



GMT 130 S, GMT 130 T



GMT 200 S, GMT 200 T

